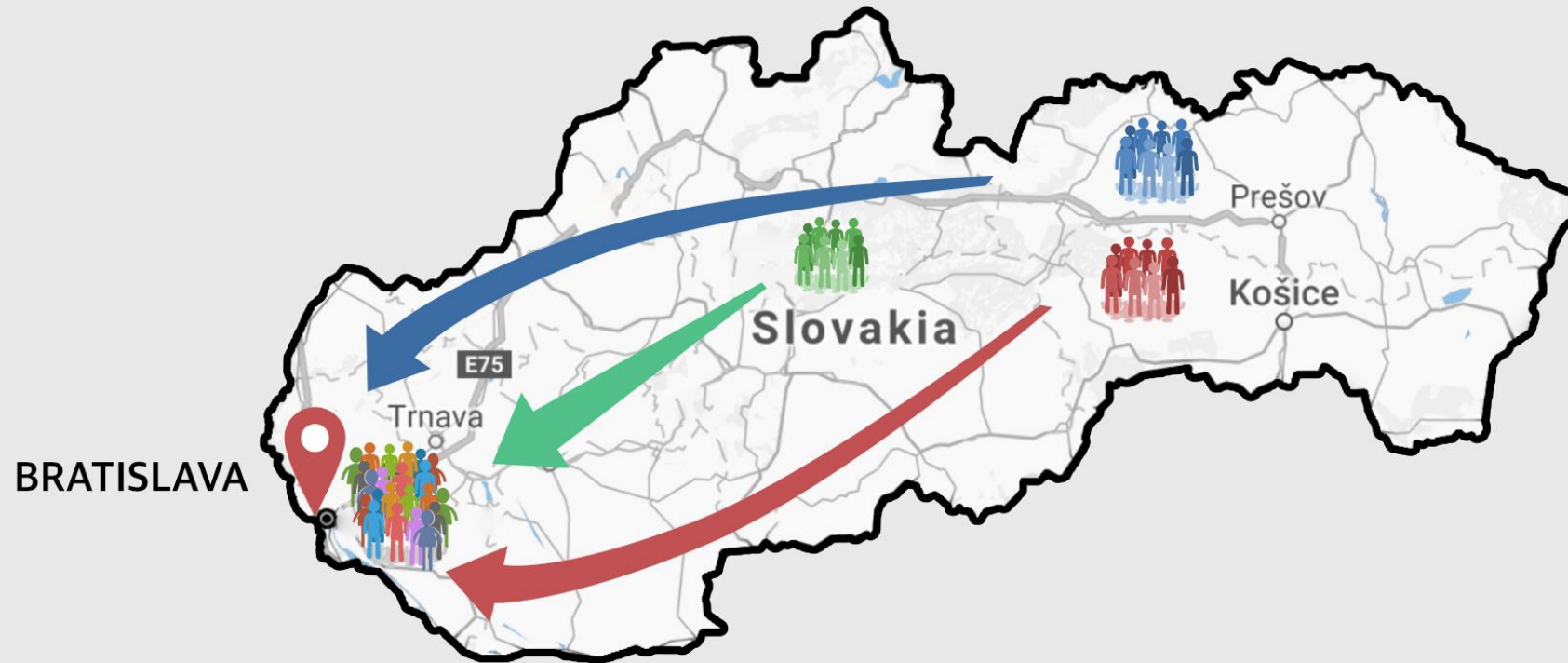
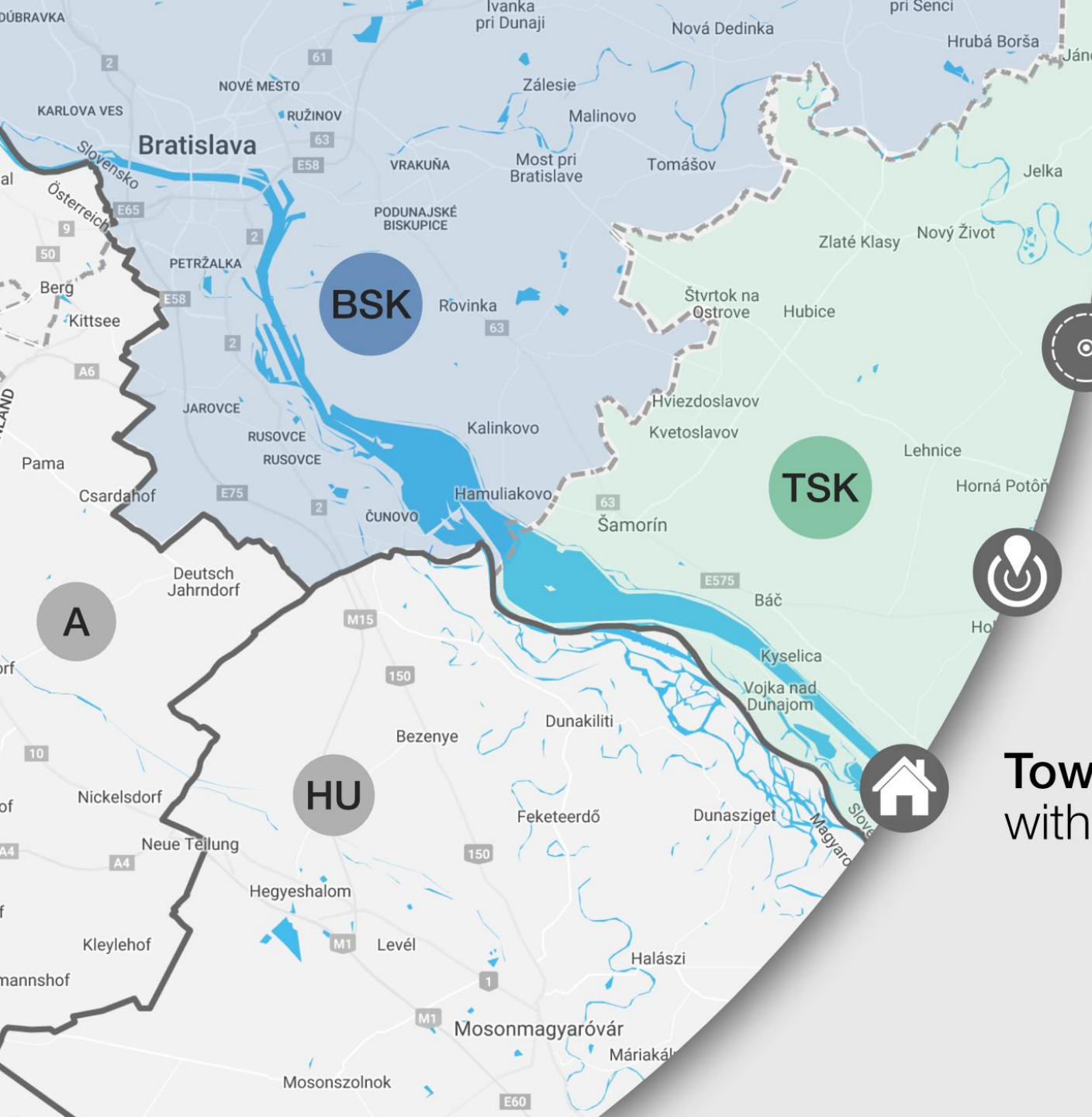




Over the last 10 years

Significantly **high increase** in the population of Bratislava and the surrounding regions





"DANUBE region"

A territory overlapped by **2** self-governing **regions**

Reaching up to **50 km** away from Bratislava in Southeast direction along the Danube river

Towns and **villages** with appr. **70.000** residents



2 hours of traveling in **traffic jam**
every working day

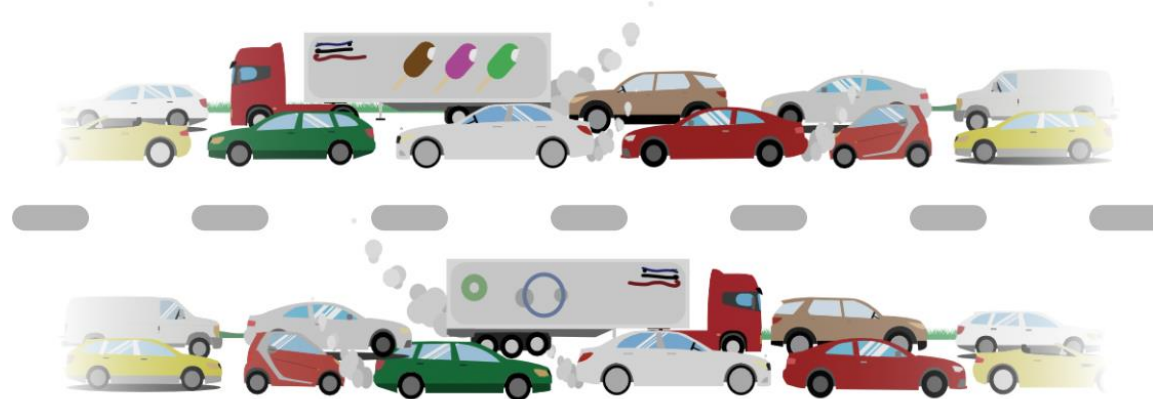
BRATISLAVA



from 06:00 - 09:30

MORNING

DANUBE
region



from 15:00 - 18:30

AFTERNOON



PRO DANUBIA

ZDRUŽENIE OBCÍ PRE MIESTNU DOPRAVU PO DUNAJI

ASSOCIATION OF MUNICIPALITIES

Established by towns and villages in the
Danube region



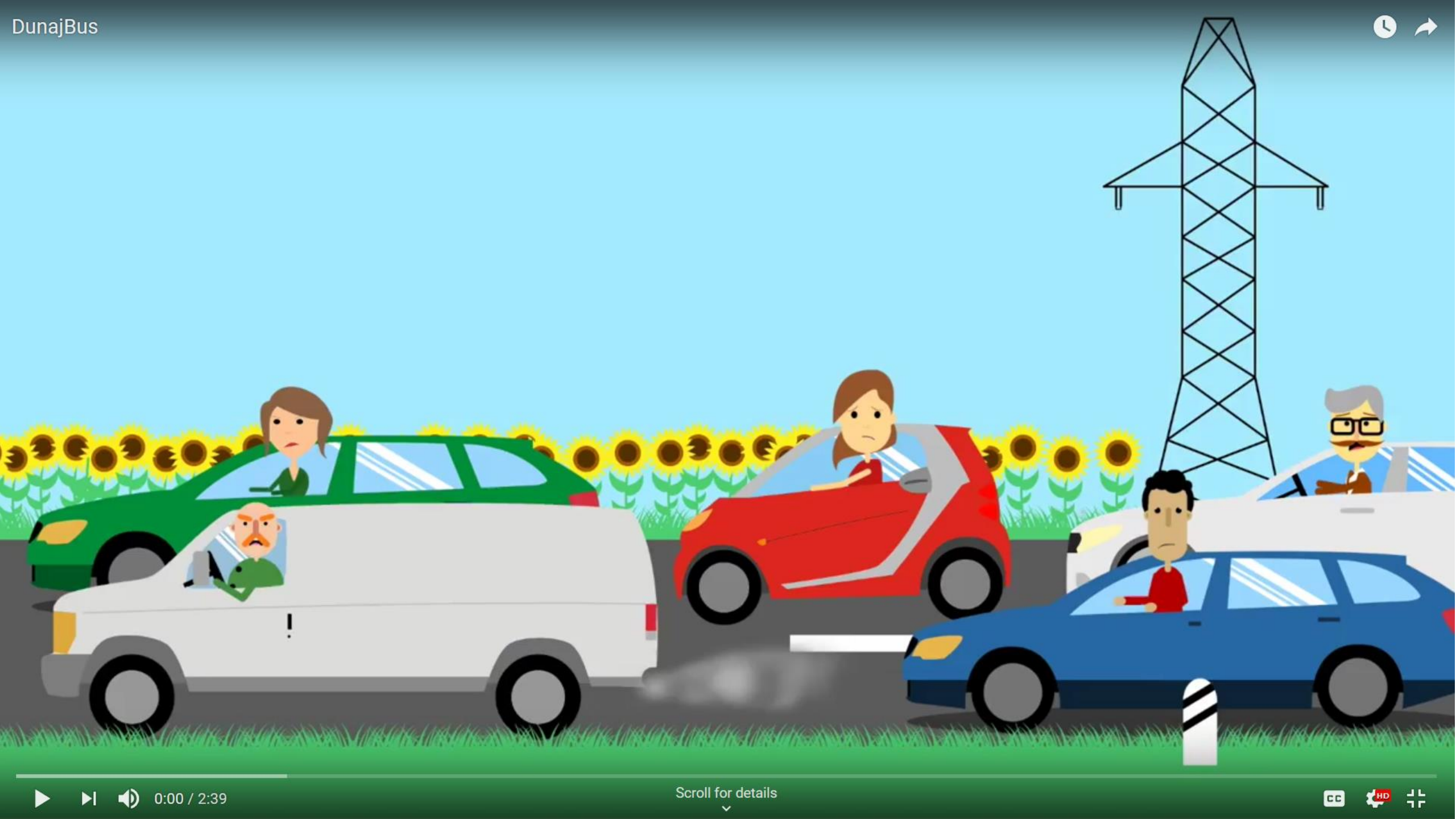
Seeking for **solutions** to find an **alternative** way of
public transportation

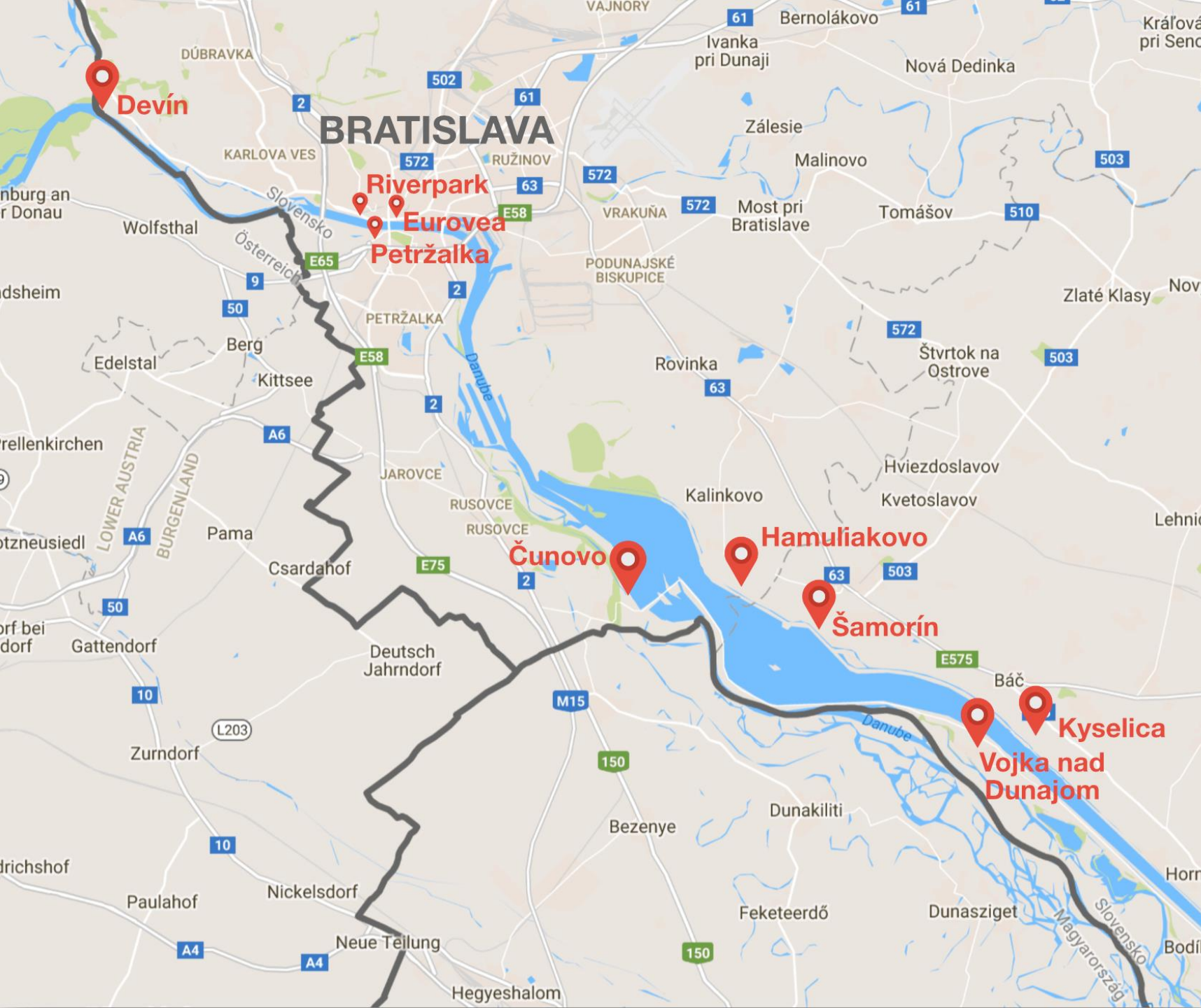


DANUBE river as a **WATERWAY**



Public survey in June 2017 -
Professional estimation of the usability





9 Locations
water bus **STOPS**



6 VESSELS

Depart every **15 minutes** in the morning and afternoon rush hours

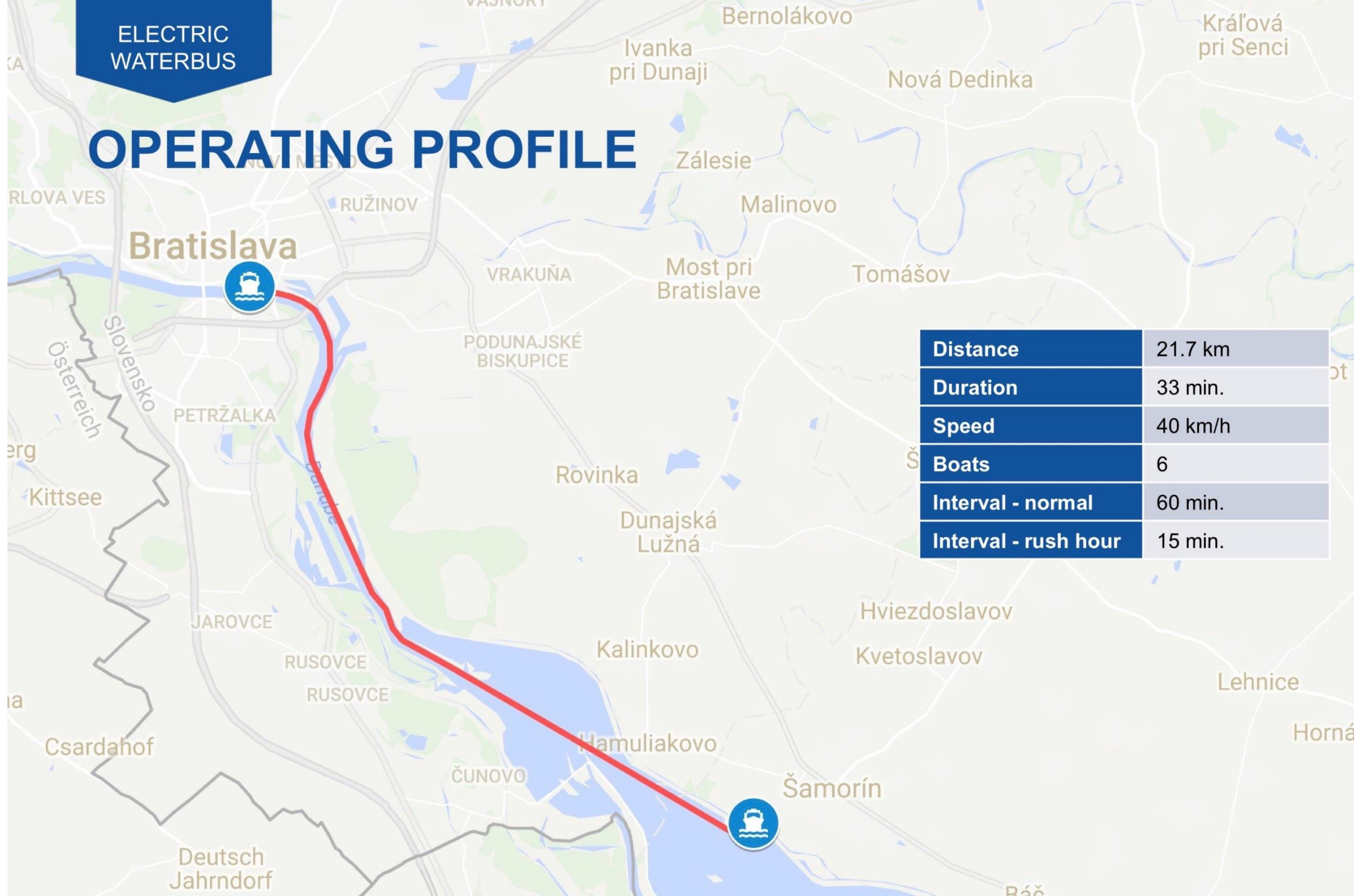
- from 06.15 - 09.30 from a “Danube region” to Bratislava
- from 14.30 - 18.30 from Bratislava to the “Danube region”



- High speed **Hybrid** boats with a **40 km/h** cruising speed
 - catamaran hull (river keeping, speed, economy)
 - 80-100 seating passengers (add. 40 standing)
30 bicycles
 - all year round operation - heating/air conditioning

ELECTRIC
WATERBUS

OPERATING PROFILE



Distance	21.7 km
Duration	33 min.
Speed	40 km/h
Boats	6
Interval - normal	60 min.
Interval - rush hour	15 min.

Projekt

DUNA BUS

9|6 TERMINALS

Floating docking pontoons with all year round services

6 Hybrid VESSELS

High speed catamaran boats with a capacity of 100 seating passengers (additional 40 standing) and 30 bicycles

PARK & RIDE

parking lots with public boat transport connections that allow commuters and other people heading to Bratislava area to leave their vehicles and transfer to a waterbus


Wave breakers and depot/maintenance **shipyard**

COMMUTER SEATING





KEY SOCIAL ECONOMIC BENEFITS ENVIRONMENTAL IMPACT

- Significantly **LESS TIME** of traveling daily to work or school
Instead of 2-3 hours **ONLY** 30 minutes
 - **Saves** the environment
Instead of 1.000 engines **ONLY** 12 engines + LNG / Fuel cell ready
 - **Connects** cycling routes
Tens of kilometers of national and international cycling routes
- 

Bratislava Integrated Transport

- ONE ticket for more means of public transport
- The ongoing negotiations show the support to integrate DunajBus into the Integrated Transport ...



Danube Transport Day

European Parliament Brussels
23.11.2017



Annual Network Meeting
09.04.2018 Slovakia





Project implementation in 18 to 20 months!



PRO DANUBIA

ZDRUŽENIE OBCÍ PRE MIESTNU DOPRAVU PO DUNAJI

ASSOCIATION OF MUNICIPALITIES