



Co-financed by the European Union

# INDanube – Centre for innovation transfer in the Danube region

## Overview of activities & initiatives

Workshop on modernisation of Danube vessels fleet

Lucia KARPATYOVA



## European Inland Barging Innovation Platform

EIBIP is a European platform of regional innovation facilitation centres, to promote the uptake of innovation by the Inland Waterway Transport sector.

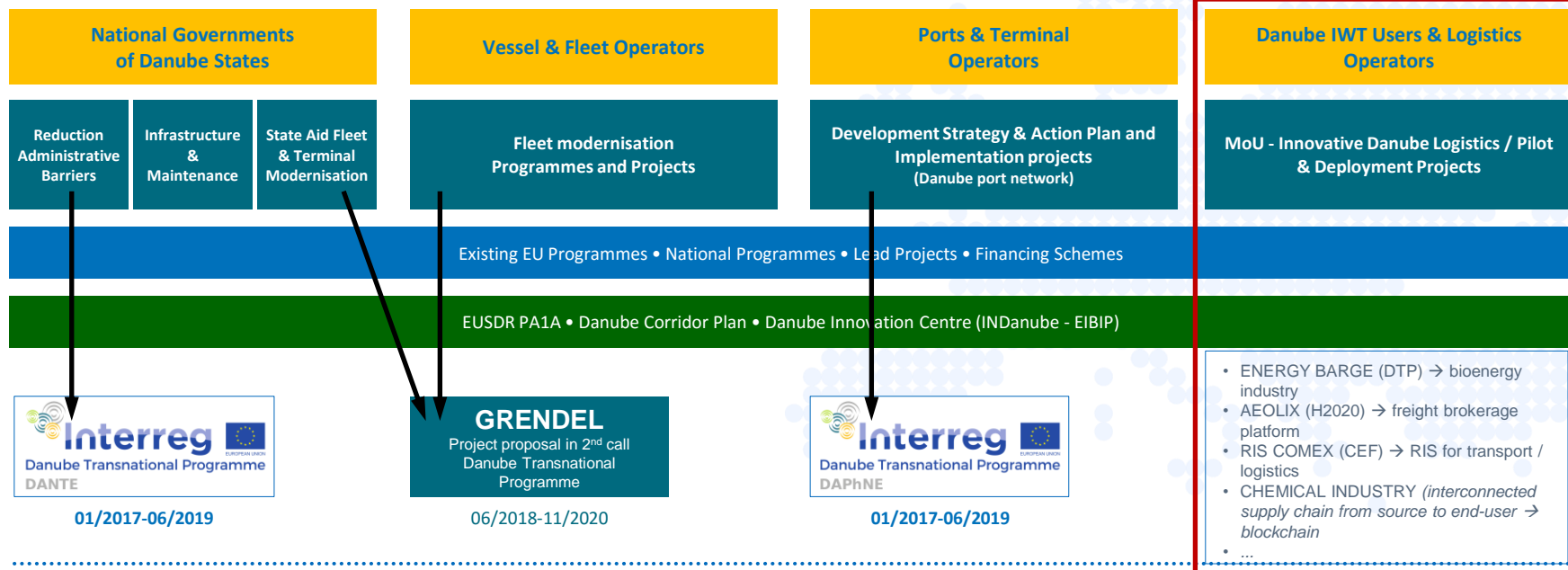


[www.eibip.eu](http://www.eibip.eu)

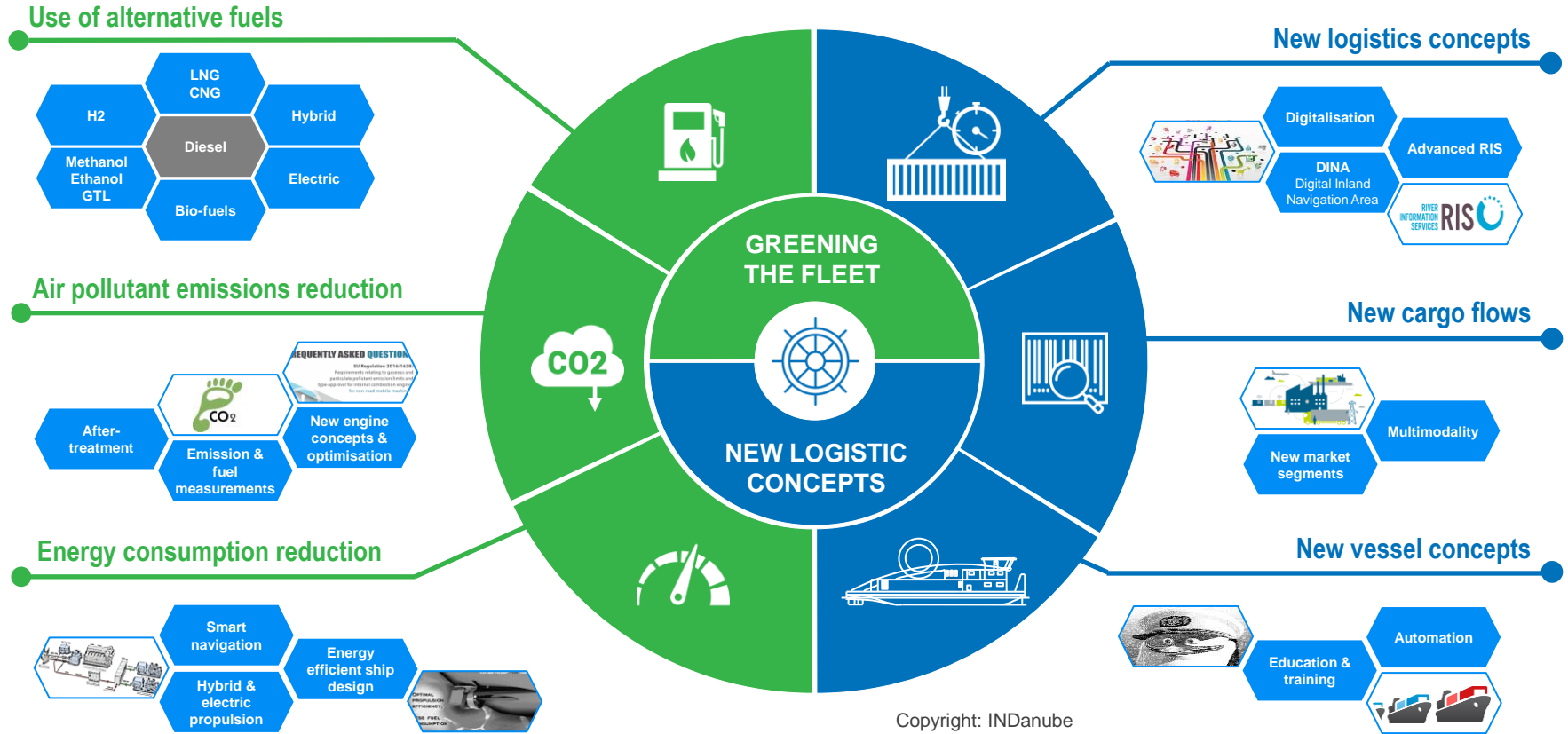


# INDanube activities vs. policy initiative

## GREEN DEAL FOR DANUBE RIVER TRANSPORT



# INDanube IWT Innovation Uptake Focus



Copyright: INDanube

# INDanube services → *innovation transfer*



## INFORMATION SERVICES

Provision of information: innovation radar, public funding / finance advice, regulatory framework advice, good practice examples & lessons learned  
*Target: vessel & fleet operators*



## (PROJECT) ASSISTANCE & CONSULTANCY

First level project analysis and support, identification of financing & funding, partners search & consortium formation  
*Target: vessel & fleet operators*



## ADVOCACY

Public support and recommendations towards the green IWT regulatory framework, public support schemes and initiatives  
*Target: national administrations & EC services*



## COMMUNICATION & DISSEMINATION

Dissemination activities incl. innovation in IWT news, stakeholders events, PR materials, media work, INDanube website updates  
*Target: IWT stakeholders, media & wider public*



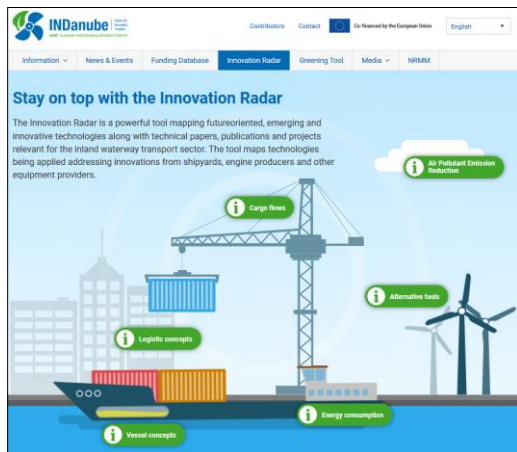
## USER PLATFORM MANAGEMENT

Preparation & operation of "Green IWT User Platform": dissemination of good practices, project facilitation & partner matching  
*Target: transport users & logistics operators*



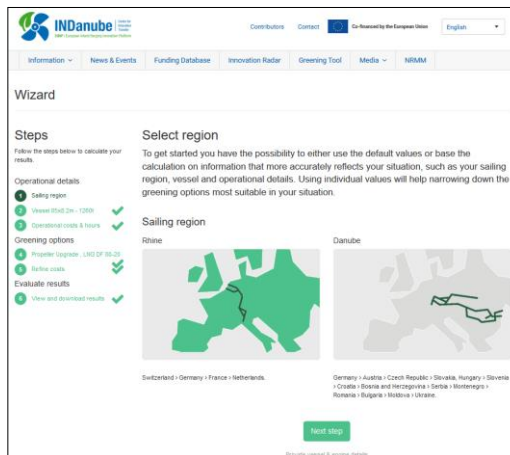


# Information services - INDanube website



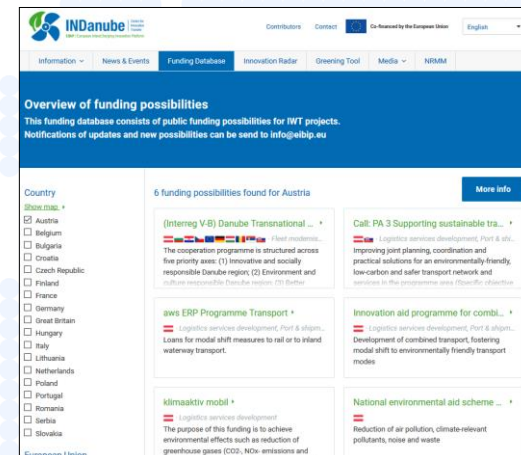
## INNOVATION RADAR

The Innovation Radar is a powerful tool mapping future-oriented, emerging and innovative technologies along with technical papers, publications and projects relevant for the inland waterway transport sector.



## GREENING TOOL

The Greening Tool is an interactive tool designed for ship owners and policy makers looking for emission and fuel consumption reduction of inland waterway vessels. It contains the most recent information about costs and benefits of available greening technologies for inland shipping.



## FUNDING DATABASE

European Funding Database, maintained by EIBIP, is an online tool consolidating public funding opportunities relevant for inland waterway transport (IWT) sector. Through this tool the IWT users can search for various funding opportunities and calls either by country or by pre-defined policy areas.





# (Project) Assistance & innovation consultancy

**1**

## Innovation project facilitation

- First level project support for inland waterborne transport stakeholders (email, phone, at dedicated events through specific match-making and consultancy workshops or speed-dating, etc.)
- Initiation and development of R&I cooperation projects potentially leading to a funding application
- Project management consultancy and support

**2**

## Innovation consultancy

- direct company consulting to prepare pilot innovation projects involving (first) technical consulting (via external experts), dedicated financing and funding consulting
- Phase 1: Involvement of internal expert
  - Collection of basic company & vessel info
  - Identification of innovation needs & form of support
  - General decision making support & preparation of the common approach
- Phase 2: Involvement of external expert
  - Involvement of external experts to detail identified solutions & contact with the technology suppliers
  - Information about the funding & financing options
  - Support with the elaboration of the business plans





# (Project) Assistance & innovation consultancy

## LNG infrastructure initiative in Slovakia - fuelLNG



DANUBE LNG

LNG infrastructure for inland waterborne and road transport users, incl. liquefaction unit

## LNG infrastructure initiative in Upper Austria

ENNSHAFEN



Part of global project investing into the LNG road infrastructure & vehicles as well as LNG terminal / bunkering station in the port of Linz or Enns.

## LNG terminal & bunkering stations in Galati & Constanta



Targeting LNG infrastructure in Galati (inland/maritime port) and Constanta.

## Enhance the Efficiency of Hungarian RIS Operation



To enhance traffic management services, modernise on-shore RIS services and improve the quality of fairway information services data

## Polish IWT fleet modernisation initiative



Retrofitting of Polish/German fleet making use of LNG as well as transporting LNG on inland waterways

## “Dunajbus” Slovakia



DANUBE LNG

Pro-Danubia - Association of municipalities for public transport on the Danube

“Green” waterborne public transport in Bratislava (Slovakia) and neighbouring cities/villages along the Danube to solve heavy traffic problems of commuters

## LNG infrastructure related initiatives



various start-up initiatives related to the LNG as fuel & cargo covering the activities related to the bunkering infrastructure as well as storage

## Mediation of financing advise



Supported stakeholders: X-Tank Refining, CFR, GSP Logistics, GSP Shipyard, COMVEX

etc.





# Communication & dissemination ...

LET'S

TALK

**INNOVATIVE**  
Danube Centre for Innovation Transfer in IWT  
Year 1 | # 1 | March 2017

Inland navigation needs targeted innovation to compete with other modes of transport.

Three big priorities of the European Commission in the current term have a strong link to innovation and rely on it to be achieved: „jobs, growth and investment“, „digital single market“ and „Energy Union and Climate“. The transport is given a high priority in the list of innovation priorities, and competitiveness, digitalisation as well as growing are the key innovation aspects particularly for the inland waterway transport (IWT) agenda.

“After ensuring the fully-fledged innovation policy and transport measures, it will be possible to ensure the full implementation of inland waterway transport”

**European Inland Barging Innovation Platform (EIBIP)**

The European Inland Barging Innovation Platform (EIBIP) is a European platform of regional innovation transfer and facilitates centres to promote the uptake of innovation for the inland waterway transport sector. The EIBIP was set up by EC/ECI-More as part of the contract which provides the financial start-up support to regional centres.

The EIBIP network consists of three main innovation centres covering Germany (D-186), France (B-174) and the Danube region (B-186/187) as well as the pre-existing innovation LAB (EC) from the Netherlands.

**INDanube regional partners**

In order to reach out to key stakeholders in the region, INDanube Management Center made arrangements with three regional organisations with shared expertise which through EIBIP receive a mandate to carry out innovation uptake activities for IWT as part of INDanube.

• National Association of Road, Shipping, Signalling and Information Systems (ASST) (Hungary) provider of the river information services in Hungary and provider of inland navigation in Hungary. Contact person: Csaba Kovács, csaba.kovacs@asst.hu

• Pro Danube Romani (Romania) is a non-profit association acting as facilitator and promoter of IWT on the Lower Danube in order to strengthen its role in international transport and logistics. Contact person: Silvia Cristescu, info@prodanube.ro

• Waterborne Transport Development Agency (Greece) in charge of the promotion and further development of inland navigation sector in Greece. Contact person: Stavros Bontas, stas.bontas@ptd.gr

Brochure

**INDanube newsletter**  
View this email in your browser

**INDanube - Centre for Innovation Transfer in the Danube Region**

Welcome to INDanube newsletter. [Click here](#) to be added as one of the innovation centres of the European inland Barging Innovation Platform. INDanube email plays an important role as the facilitator and promoter of innovation in inland waterways transport on the Danube and its navigable tributaries.

It is an intention of this newsletter to inform all inland waterway transport stakeholders and other interested parties about the innovation activities in the field of inland shipping.

**Green deal for Danube river transport**

The Danube region needs smart, sustainable and inclusive growth based on an eco-efficient and reliable transport system. The Danube gateway can provide cost-effective logistics solutions to many industries to support their competitiveness and to ensure economic growth and the creation of jobs.

The high economic potential for turning the Danube into a core logistic axis are without any doubt. A targeted, long-term cooperation of public and private sector with few commitments is needed to ensure the critical role of integration of infrastructure and reduction of transport barriers. The “Green Deal for Danube River Transport” forms the new policy and business framework to improve efficiency and environmental performance of Danube waterway transport system. [Read more...](#)

**TOP STORIES**

**Hydrogen-based PPTM LNG** is to build the first LNG bunkering station in Germany at a waterfront site in Cologne on the Rhine – with Shell on board as the launch customer. PPTM will build the bunkering hub to deliver gas as marine fuel to LNG-fueled inland waterway vessels. Supporting the company's plan to develop European supply infrastructure for road and marine customers, their general manager, Christof von Langer, visited the Danube region. [Read more...](#)

**Pro Danube Romani (Romania)** is a non-profit association acting as facilitator and promoter of IWT on the Lower Danube in order to strengthen its role in international transport and logistics. Contact person: Silvia Cristescu, info@prodanube.ro

eNews

**INDanube**  
Centre for Innovation Transfer in the Danube Region

Welcome to INDanube, the facilitator and promoter of innovation in inland waterways transport on the Danube and its navigable tributaries.

**How INDanube can help you with Innovative inland barging**

**About INDanube**

INDanube aims to generate and to facilitate innovation projects through its services and shall engage in the build-up of a policy framework which enables and supports innovation in Danube IWT. This policy framework shall be embedded in the existing initiatives of the European Commission which foster the further development. [Read more...](#)

**Main services**

Successful innovation transfer demands the definition and application of a wide portfolio of instruments. INDanube expands the knowledge transfer in the Danube region regarding the innovation needs from the perspective of the society, vessel & fleet operators, transport users and logistics operators, authorities and policy makers. The main services are: [Read more...](#)

**Regional Partners**

In order to reach out to key stakeholders in the region, INDanube made arrangements with three regional organisations with shared expertise such as Waterborne Transport Development Agency (ATD) which is the state-owned promotion agency for inland waterway transport in Austria, with RIDE which is the leading organisation for development. [Read more...](#)

**Upcoming events**

**PROMINENT Final Event**

17 April 2018: [www.prominent.net.at](#) After 3 extensive years, the PROMINENT projects comes to its end and will present its results during the PROMINENT Final Event held in Vienna, Austria. Besides the results...

**Workshop on modernisation of Danube**

18 April 2018: The emission reduction limits set out in the Road Road Modernisation Directive obligate vessel operators to reduce air pollutant emissions by using alternative fuels or installation of exhaust after treatment systems.

**Common Issues Meeting held on 22 November 2017 in Bratislava**

22 November 2017: From 20 to 24 November Bratislava was the host city of the second RIS Week in 2017. Between expert group meetings, Wednesday 22 November was devoted to the RIS.

INDanube website



**Fact sheets for tools (Greening tool) & databases (Funding DB & Innovation Radar) & selected technologies (along with the EU-wide strategy)**

**INDanube is run by** 

Handelskai 265, 1020 Vienna/Austria

T +43 1 890 66 47-11

E [office@indanube.eu](mailto:office@indanube.eu) W [www.indanube.eu](http://www.indanube.eu)

**Lucia Karpatyova**

Senior Project Manager

Handelskai 265, 1020 Vienna/Austria

M +43 680 22 60 575 T +43 1 890 66 47-22

E [karpatyova@prodanube.eu](mailto:karpatyova@prodanube.eu) W [www.prodanube.eu](http://www.prodanube.eu)

Supported by



# INDanube - Centre for Innovation Transfer in the Danube Region

Welcome to INDanube, the facilitator and promoter of innovation in inland waterways transport on the Danube and its navigable tributaries.

[More information](#)